

INSTRUCTIONS FOR USE

Please read carefully

CONDOR[®]
condorpumps.com

TR 1000 Trough Cleaning System

Thank you for purchasing the CONDOR TR 1000 Trough cleaning system. We are sure this product will save you time and help to keep your livestock supplied with good quality water. Follow carefully all instructions for use and this product will give you years of service.

COMPONENTS

50mm Semi-trash pump

10m x 50mm layflat discharge hose, cap & liner an hose clamp

4m x 40mm suction hose, camlocks and clamps.

Trough cleaning tool, c/w, fittings, and regulating valve

ASSEMBLY

- 1 Prepare pump for use (see separate instruction sheet)
Note - this pump is a Semi-trash model and is fitted with special seals to cope with grit and debris. Under no circumstance should this pump be run without water in the casing.
- 2 Assemble trough cleaner tool as per drwg. Attach handle to head with flange nut supplied. Place screen inside and then plastic foot and secure with foot with self tapping screws.
- 3 Fit valve and camlock to top of the handle. (all threads need thread tape as supplied)
- 4 Fit camlock to suction side of pump.
- 5 Fit camlocks to suction hose (heat ends in boiling water to soften) and fasten with clamps.
- 6 Fit cap and liner to discharge layflat hose and attach to pump.
- 7 Connect suction hose to pump and suction tool.

OPERATION

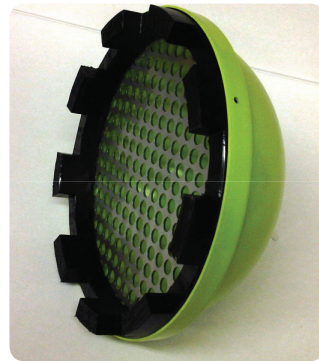
- 1 Fill pump casing with water.
- 2 Turn off valve on handle and start motor (you will not need to run motor at full revs)
- 3 Place suction tool in trough and open valve, once pump starts sucking from trough close valve slightly to prevent sucking trough dry before you have - finished cleaning.
- 4 If there are leaves in the trough you may need to clean them from the head, to do this turn valve off before removing head from the water.



Assembly of handle and valve – use the thread tape here



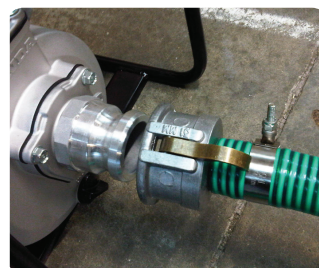
Fit screen in bowl after fixing handle



Fit plastic foot and fix with 2 x screws



Connect layflat with pump coupling supplied with pump



Fit camlocks to pump (thread tape here) and hose