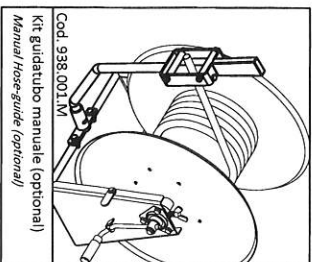
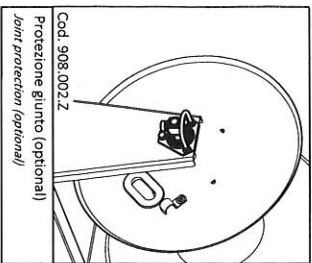
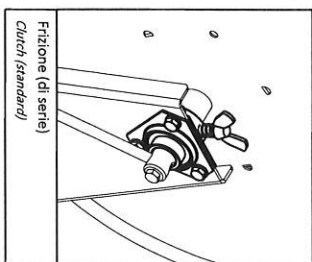
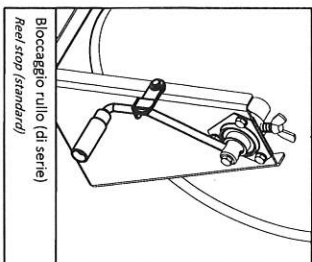
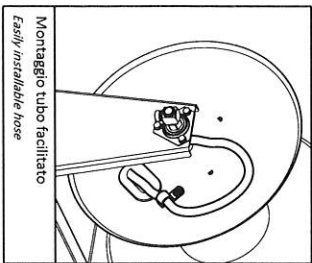


# CARATTERISTICHE PRINCIPALI

## MAIN FEATURES



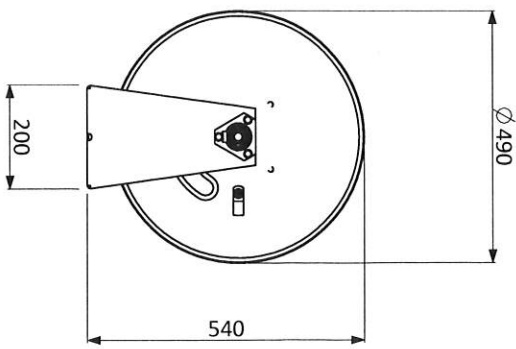
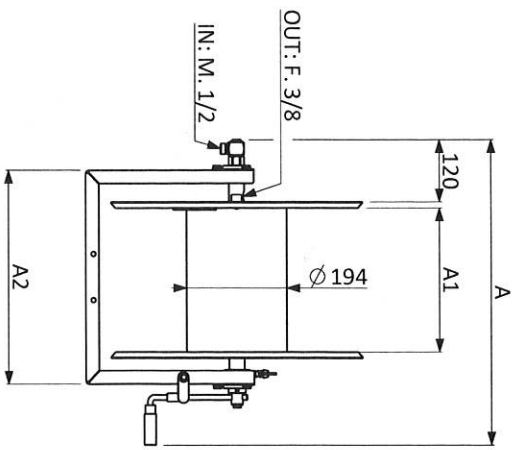
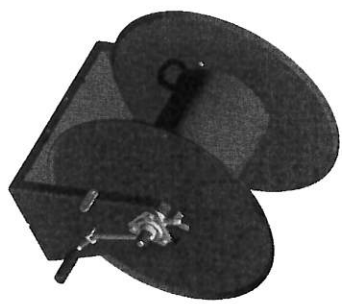
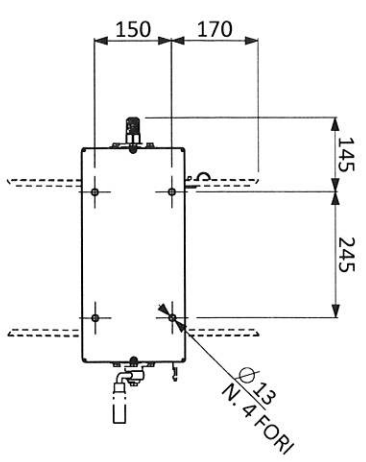
### Capacità tubo (metri) - Diametro esterno (millimetri)

#### Hose capacity (meters) - Outside diameter (millimeters)

Modello Model	O.D. mm																																
	14	15	16	17	18	19	20	21	22	23	24	25	26	27	28	29	30	14	15	16	17	18	19	20	21	22	23	24	25	26	27	28	29
300.050.M	126	112	105	85	85	66	66	60	49	45	45	35	31	31	31	24	126	112	105	85	85	66	66	60	49	45	45	35	31	31	31	24	
300.100.M	210	167	162	133	127	103	103	97	75	75	70	55	52	52	48	36	210	167	162	133	127	103	103	97	75	75	70	55	52	52	48	36	
300.150.M	283	233	220	182	178	144	140	135	104	100	96	75	71	71	68	47	283	233	220	182	178	144	140	135	104	100	96	75	71	71	68	47	
300.200.M	357	298	287	232	221	180	176	165	129	125	125	95	92	88	85	63	357	298	287	232	221	180	176	165	129	125	125	95	92	88	85	63	

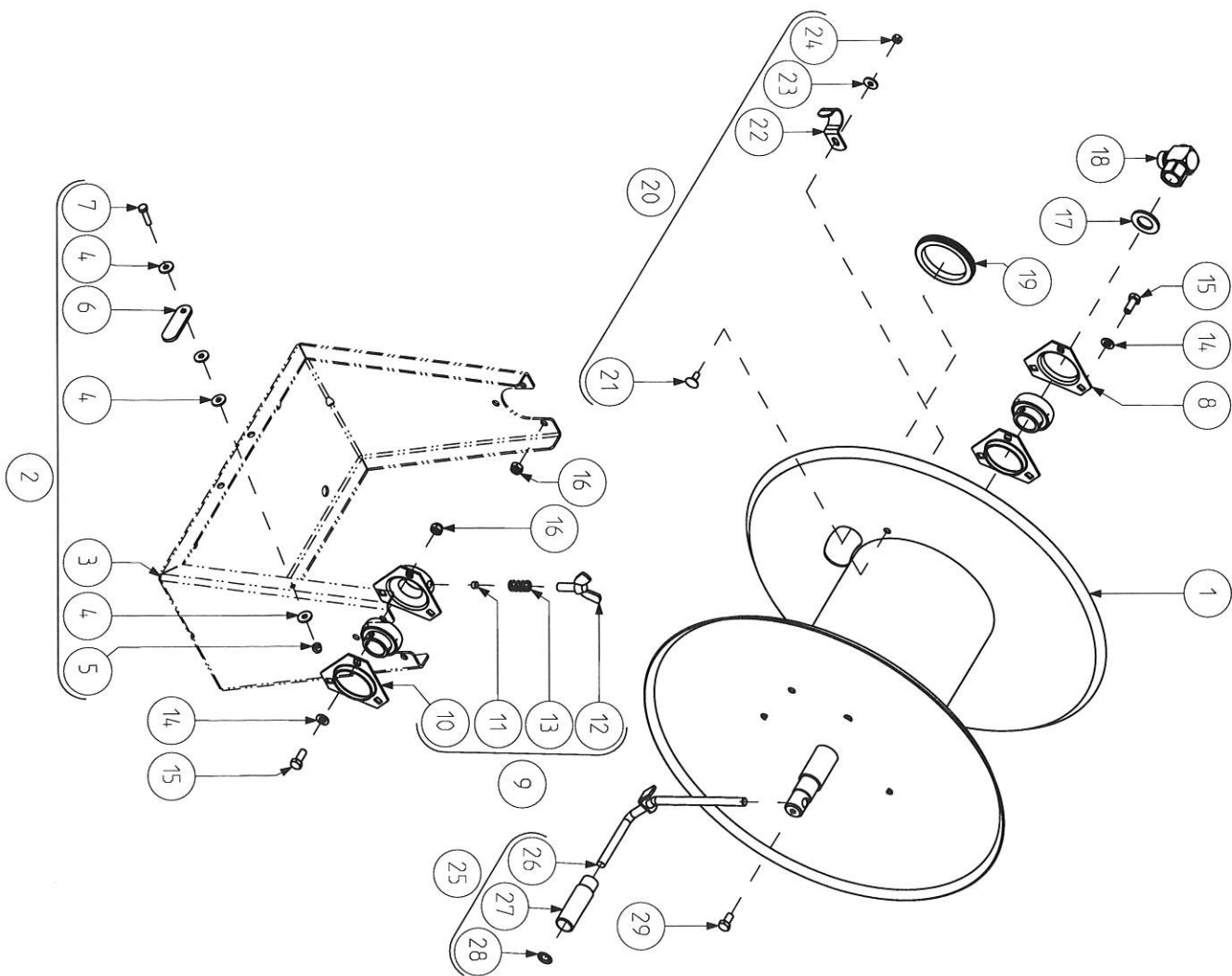
# MAGNUM

## - REV. A -



Nota: Le illustrazioni e i dati tecnici qui indicati si intendono a titolo indicativo e non sono vincolanti. Per ulteriori specifiche non estate a contattarci.  
 Note: The pictures and technical data provided here are intended purely as an indication and are not binding. For further specifications feel free to contact us.

Codice Code	Lunghezza e diametro tubo consigliati. Recommended hose length and diameter	Pressione Pressure bar	Temperatura massima Maximum temperature °C	Dimensioni Dimensions (mm)			Peso Weight kg
				A	A1	A2	
300.050.M	70 m - Ø 3/8	250	120	495	180	320	17
300.100.M	110 m - Ø 3/8	250	120	595	280	420	20
300.150.M	160 m - Ø 3/8	250	120	695	380	520	23
300.200.M	200 m - Ø 3/8	250	120	795	480	620	26



CODICE	DENOMINAZIONE	RULLO_MAGNUM_V (POS. 1)	KIT_TELAIO_MAGNUM (POS. 2)	TELAIO_MAGNUM (POS. 3)
300_050_M	MAGNUM - 50 -	1.64_10_01_02	976_002_F	1.76_00_03
300_100_M	MAGNUM - 100 -	1.64_10_02_02	976_003_F	1.76_00_04
300_150_M	MAGNUM - 150 -	1.64_10_03_02	976_004_F	1.76_00_05
300_200_M	MAGNUM - 200 -	1.64_10_04_02	976_005_F	1.76_00_06

RIF.	CODICE	REV.	DENOMINAZIONE	QT
1	RULLO_MAGNUM_V	D	RULLO MAGNUM - VEDI TABELLA -	1
2	KIT_TELAIO_MAGNUM	A	KIT TELAIO MAGNUM - VEDI TABELLA -	1
3	TELAIO_MAGNUM_V	C	TELAIO MAGNUM - VEDI TABELLA -	1
4	ROND-020618	A	RONDELLA PIANA - D. 6 X 18 - ZB - UNI 6593 -	4
5	DADO-0706	A	DADO ES. - AUTOBLOC. ALTO - M6 - ZB - 6S - UNI 7473 -	1
6	1.32_00_03_01	B	LEVETTA B/RULLO - CORTA -	1
7	VITE-020625	A	VITE TE - M6 X 25 - ZB - 8.8 - UNI 5739 / 5737 -	1
8	1.22_25_01	A	SUPP. FLANGIA TRIANGOLARE - UBPF5-5 - D.25 - SCHIACCIATO -	1
9	932_006_Z	A	KIT FRIZIONE - MAGNUM -	1
10	1.22_25_02_01	B	SUPP. FLANGIA TRIANGOLARE - UBPF5-5 - D.25 - FRIZIONE -	1
11	1.32_20_01	A	PASTIGLIA FRIZIONE - D.8 -	1
12	2.86_90_02	A	VITE AD ALETTA - M10 X 30 - UNI 5449 -	1
13	1.46_00_02	A	MOLLA A FILO - COMPRESSIONE - 13 X 1.2 X 31 -	1
14	ROND-0108	A	RONDELLA PIANA - D. 8 - ZB - UNI 6592 -	6
15	VITE-020820	A	VITE TE - M8 X 20 - ZB - 8.8 - UNI 5739 / 5737 -	6
16	DADO-0908	A	DADO ES. - AUTOBLOC. BASSO - M8 - ZB - 6S - UNI 7474 -	6
17	ROND-0120	A	RONDELLA PIANA - D. 20 - ZB - UNI 6592 -	1
18	1.58_20_20	A	GIUNTO GIREVOLE A 90' - 1/2 - M-F -	1
19	2.50_10_02	A	PASSACAPO - 60 X 65 X 78 X 9 X 2.5 -	1
20	912_002_F	A	KIT GAFFETTA - 1/2 -	1
21	VITE-060616	A	VITE TTQST - M6 X 16 - ZB - 4.6 - UNI 5731 -	1
22	2.12_10_02	A	GAFFETTA - 1/2 -	1
23	ROND-020618	A	RONDELLA PIANA - D. 6 X 18 - ZB - UNI 6593 -	1
24	DADO-0306	A	DADO ES. - MEDIO - M6 - ZB - 6S - UNI 5588 -	1
25	944_005_Z	A	KIT MANIGLIA PIEGATA - LUNGA - D.10 - C/BLOCCO -	1
26	1.44_00_29_01	A	MANIGLIA PIEGATA - LUNGA - D.10 - C/BLOCCO -	1
27	1.44_10_01	A	IMPUGNATURA GIREVOLE SENZA PERNO - HFP 80 - D. 23 -	1
28	FISS-10	A	FISSATORE ELASTICO - M10 - UNI 4759 -	1
29	VITE-020816	A	VITE TE - M8 X 16 - ZB - 8.8 - UNI 5739 / 5737 -	1