

# Technical Data

## HYTEK HOSE RETRACTOR MAST

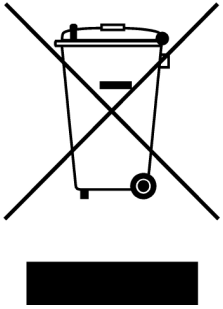


- HMAST.F
- HMAST.W

Please read carefully before commencing installation

Registered Office: HYTEK (GB) LIMITED, Delta House, Green Street, Elsenham,  
Bishop's Stortford CM22 6DS UK. Registered in England No. 1915382  
Tel: +44 (0) 1279 815 600 Fax: +44 (0) 1279 812 978 email: [info@hytekgb.com](mailto:info@hytekgb.com)  
Web: [www.hytekgb.com](http://www.hytekgb.com)

## **ENVIRONMENTAL INFORMATION**



European Directives 2002/96/EC and 2003/108/EC require the equipment bearing this symbol on the product and or it's packaging must not be disposed of with unsorted municipal waste. The symbol indicates that the product should be disposed of separately from regular household waste streams. It is your responsibility to dispose of this and other electric and electronic equipment via designated collection facilities appointed by the government or local authorities.

## **IMPORTANT WARNING NOTES**

1. Installation of this equipment should be carried out by a qualified fuel installation engineer.
2. The installation must conform to all relevant local authority regulations and standards.

# **CONTENTS**

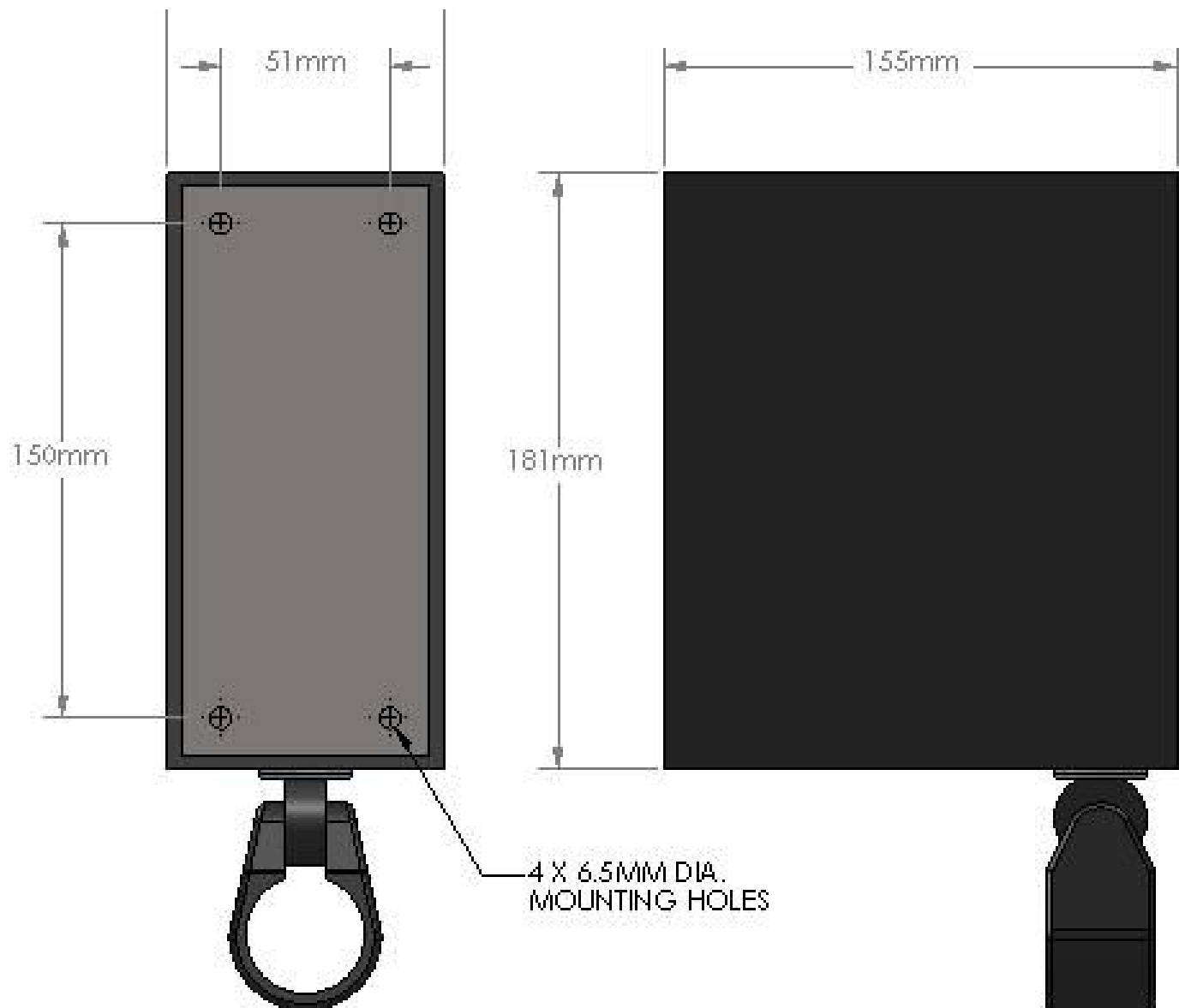
<b>ITEM</b>	<b>QTY</b>	<b>DESCRIPTION</b>	<b>PART No.</b>
1	1 off	Hose mast reel (With hose clamp and sleeve)	HMAST.W
2	1 off	Hose mast top cap (Bolted to above part)	A5188
3	1 off	1½” Pipe clip with fixings	P-CLIP.6G
4	1 off	1½” Four bolt flange	FLING.15

## **INSTALLATION**

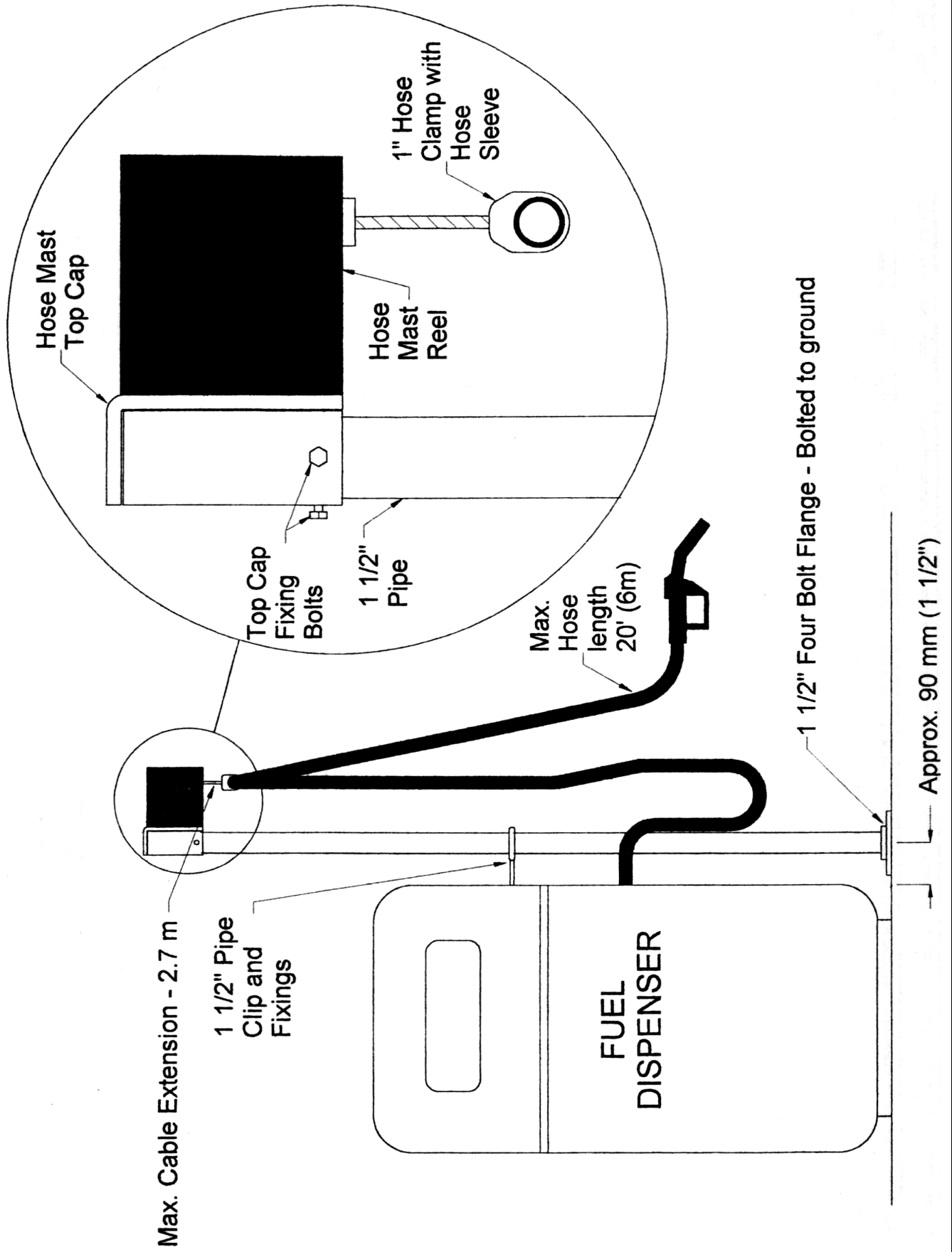
To ensure stability of this product it must be positioned alongside a suitable supporting structure, such as a fuel dispenser or security cabinet.

1. Bolt the 1½" four bolt flange to the ground in the position intended for the hose mast. Ensure that the centre of the flange is positioned approximately 90mm (3½") from the side of the supporting structure. See diagram opposite.
2. Cut a 1½" BSP tapered thread on one end of a 2 metre (79") length of 1½" bore steel pipe.
3. Screw the length of pipe into the flange and secure to the supporting structure at a height of approximately 1 metre (40") using the 1½" pipe clip and fixings. A 12mm fixing hole will have to be drilled in the structure to accommodate the fixings.
4. Slide the hose mast top cap over the top of the length of pipe and secure in position by tightening the top cap fixing bolts. See diagram opposite.
5. Attach the 1" hose clamp to the fuel delivery hose (Maximum hose length 6 metres/20 feet). Use the hose sleeve provided when clamping onto a ¾" bore hose. Ensure the hose clamp is positioned so that the fuel delivery hose is suspended above ground level.

# DIMENSIONS



# **HYTEK HOSE RETRACTOR MAST - RECOMMENDED INSTALLATION**





# **DECLARATION OF CONFORMITY**

**HYTEK**  
FUEL & LUBRICATION  
EQUIPMENT



Date of Issue: 3<sup>rd</sup> February  
2010

Equipment Details: HMAST.F and HMAST.W  
Hose retractors

Applicable standards: Machinery Directive  
2006/42/EC

Authorized By: Clive Wellings  
Technical Manager Hytek

Declaration Number: EC076