

CENTRIFUGAL PUMPS

4" 444 SERIES CAST IRON PUMPS

FEATURES

- Cast iron construction for rugged dependable service
- Carbon ceramic seal with stainless steel cup and spring with FKM rubber
- Replaceable inlet and outlet flanges
- Dynamically balanced impeller
- Heavy duty slinger seal on motor shaft
- Large weep holes between pump end and engine
- Recommendation for 444POI: use with 10 pound per gallon material or more
- Due to weight and size of pumps, Banjo ships these by truck only.
- Engine warranty service available at authorized dealers



444 SERIES CAST IRON PUMPS W/GAS ENGINES

PART NO	DESCRIPTION	HP	QTY
444PIH24	4" CAST IRON PUMP W/24 HP HONDA® ENGINE	24	1



WARNING! DO NOT RUN PUMP DRY, RESTRICT OR REDUCE PORT SIZES OR DEAD HEAD PUMP



WARNING! DO NOT USE WITH FLAMMABLE LIQUIDS

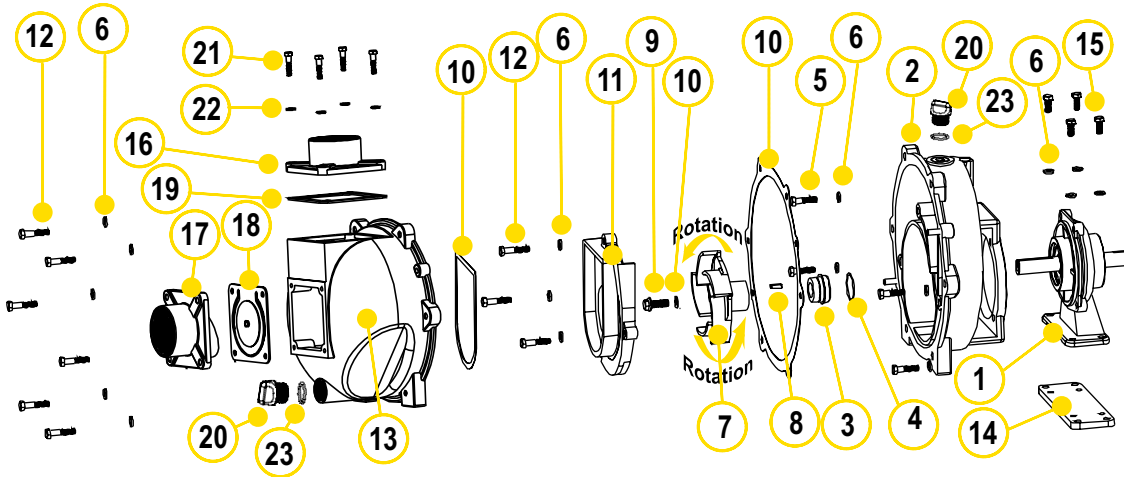


444 SERIES CAST IRON PUMP ONLYS

PART NO	DESCRIPTION	HP	QTY
444POI	4" CAST IRON PUMP ONLY W/ 1/4" X 3/8" SHAFT & 6 VANE IMPELLER UNASSEMBLED	N/A	1

CENTRIFUGAL PUMPS

4" 444 SERIES CAST IRON PUMPS



REPLACEMENT PARTS 4" CAST IRON PUMPS

ITEM	PART NO	DESCRIPTION	QTY
2	16707	REAR BRACKET	1
3	18435	MECHANICAL SEAL	1
4	V10264	O-RING	1
5	17704	3/8" - 16 X 1.25" SS CAP SCREW	4
6	V20018	3/8" SS LOCK WASHER	13
7	16775	4" IMPELLER	1
8	16901	1/4" SQ. 3/4" KEY STOCK	1
9	16765	IMPELLER BOLT	1
10	16019	GASKET SET	1
11	16702	VOLUTE	1
12	V20011SS	3/8" - 16 X 1.75" SS BOLT	9
13	16712	BODY	1
16	16000	4" NPT OUTLET FLANGE	1
17	16002	4" NPT INLET FLANGE	1
18	16706	INLET GASKET W/ CHECK	1
19	16011	OUTLET GASKET	1
20	13777	3/4" PLUG	2
21	18027	3/8" - 16 X 1.50" HHCS	8
22	V20018	3/8" SS LOCK WASHER	8
23	13778	O-RING	2
N/S	16099	IMPELLER REMOVAL BOLT	1
N/S	16751	BRACKET SHIM SET	1
N/S	16752	IMPELLER SHIM	1
N/S	18033	HANDLE	1
N/S	18034	5/8" SS JAM NUT	1

